



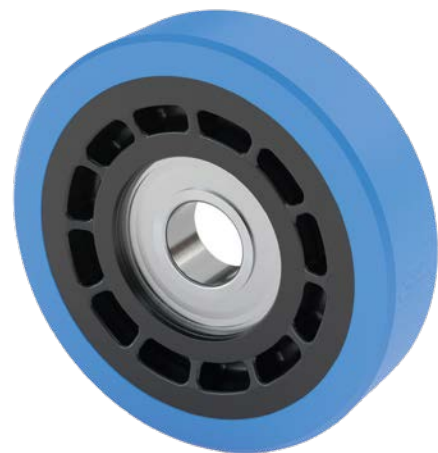
Support and guiding wheels

Application / Challenges

In the intralogistics sector, support and guiding wheels are mainly used in sortation and conveyor systems.

They have to withstand very high loads due to the extremely tough operating conditions. High availability is vital for sortation systems – breakdowns and maintenance stoppages usually bring long logistics chains to a standstill.

Support and guiding wheels need to operate reliably for years on end, often around the clock, without the need for maintenance. Other key requirements include low noise emissions and minimal running resistance.

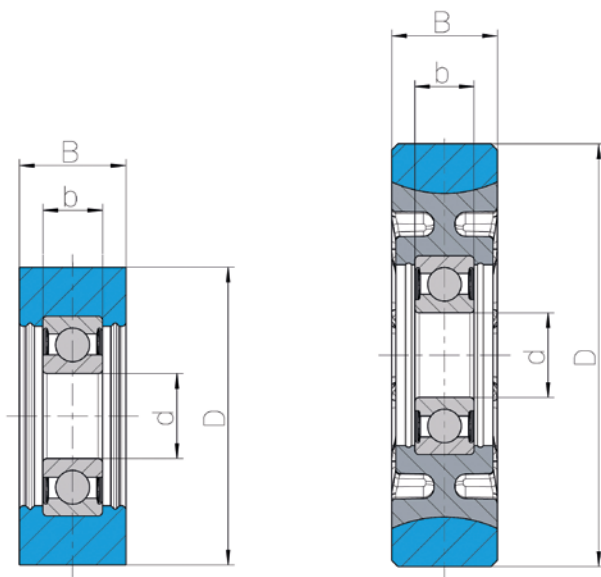


Solution and materials

The tyres on our support and guiding wheels are made from PAS-PU, a thermoplastic elastomer with excellent tear resistance and outstanding mechanical properties. It is also fully hydrolysis-resistant.

On the 1C wheels, the highly pre-tensioned tyre is attached directly to the ball bearing. The tyre on the 2C wheel is non-detachable and welded directly onto the fibre-glass-reinforced polyamide hub. The ball bearing on this model is fully enclosed by the hub.

faigle only uses ball bearings from selected manufacturers audited by the company.



Customer Benefits

- ✓ Long service life thanks to hard-wearing material – significantly higher abrasion resistance compared with rubber
- ✓ No hydrolysis-related ageing or damage – reliable operation, including in damp environments
- ✓ Shorter lead times and cost-effective production thanks to injection moulding
- ✓ Securely fitted tyre ensures reliable operation
- ✓ 2C wheel also suitable for axial loads, misalignment and cornering
- ✓ Quality-approved ball bearings that meet the highest standards ensure trouble-free operation over many years

Specifications

D	30 – 120mm
d	6 – 20mm
B	12 – 35mm
b	6 – 16mm

Tyre hardness:	75 – 95 Shore A 54 – 65 Shore D
Load capacity:	100 – 2.000 N
Speed:	0 – 4m/s