




***faigle***

**faigle wheels**  
for intralogistics systems

*moving forward*



 Turn to page 12 for details of our standard wheel range

## A reliable partner



Dear customers and partners,

faigle leads the way in the plastic wheel market. A passion for developing special components for a range of applications has been our trademark for the past 75 years. Our solutions are mainly used in intralogistics. faigle supplies wheels to big-name manufacturers of baggage and parcel sortation systems, as well as conveyor and warehouse logistics systems all over the world.

And we always move with the times: as intralogistics systems have become faster and faster, energy efficiency has grown in importance – from both an environmental and a financial point of view. Selecting the right thermoplastic components can help to achieve considerable weight reductions, significantly boosting the cost effectiveness of intralogistics systems into the bargain. Today, faigle's heavy-duty support and guiding wheels set the industry standard.

We have plants in Hard (AT) and at three further locations in Europe and Asia, where we produce high-quality components that ensure exceptionally reliable logistics operations around the world. faigle wheels help to move 180 million parcels securely every day, and at any one time, about two million tonnes of goods are being transported using faigle products.

This catalogue gives you an overview of our standard components. Our comprehensive advisory and development services, coupled with our unrivalled plastics and tribology expertise, enable us to help you find the most efficient and effective solution.

This is our promise – a promise you can rely on.

Yours,

Friedrich Faigle  
Group CEO



Extensive  
engineering know-how

## Number one worldwide

faigle is the global leader in engineering plastics solutions. Numerous well-known manufacturers from a wide range of industries take advantage of faigle's plastics testing facilities and in-depth expertise as part of their product development processes. As a faigle customer, you benefit from our experience in various industries.

## 75 years of plastics expertise

With a track record stretching back 75 years, our company has built up a wealth of experience and a valuable knowledge base which we can put at your disposal. If you want to speak to seasoned industry experts, you've come to the right people. As plastics experts with extensive knowledge of applications engineering, we can provide you with the best possible technical advice and support.

# Quality – zero compromises

## OEM quality

We have been producing wheels for numerous leading package and baggage sorter system manufacturers for years. So we know virtually everything there is to know about the industry's product and quality requirements. Our experience and expertise are reflected in the products in our standard range. Wheels are constantly exposed to a variety of environmental influences, such as humidity, different oils, detergents and solvents, rainwater, dirt and salt water. This is why we only provide you with tested and quality-approved products in accordance with faigle factory standards.

## What we can do for you:

- Identify parts
- Select compatible parts
- Analyse damage
- Solve problems, such as excessive wear or high noise levels
- Develop product improvements

## State-of-the-art equipment

We use cutting-edge, high-performance systems to develop, construct and optimise our products, and calculate specifications. We use a high-end CAD system for design engineering. Using the finite element method (FEM), we can reliably simulate the load bearing capacity of wheels, as well as their strength and deformation behaviour at the design phase of product development. Our designers also use Moldflow simulation to optimise injection moulding processes for wheel production.

## In-house inspection and test lab

As the world's leading wheel specialists, we work to continuously improve our quality assurance processes. We use the latest equipment to test our materials and finished parts, and regularly update our test benches. This enables us to conduct tests which more accurately reflect real-world conditions. We evaluate and develop application-specific materials for our customers in our in-house laboratories – going the extra mile to ensure that your facilities keep on operating reliably.

## Quality management

faigle has been certified according to the **EN ISO 9001** standard for a quarter of a century. Our environmental management system also has **EN ISO 14001:2015** certification.



# Top-quality materials for optimal solutions

## PAS-PU H

The tires for our wheels are made from faigle PAS-PU H, a thermoplastic polyurethane. We offer a range of different hardness levels – from 75 Shore A to 64 Shore D – depending on your application.

### **Abrasion resistance**

The abrasion resistance of PAS-PU H is several times higher than that of rubber, for example. This makes PAS-PU H the perfect material for the tough conditions that wheels are subjected to in continuous operation.

### **Damping behaviour**

PAS-PU H has excellent damping qualities and is highly effective in absorbing shocks and troublesome vibrations.

### **Hydrolysis resistance**

Compared to conventional materials, hydrolysis-resistant PAS-PU H can more than double a wheel's life span – especially in high-humidity environments. This means our wheels operate reliably in parts of the world where other materials fall short. Conventional polyurethane can become brittle and cracked

if it is permeated by moisture. More than 20 years of real-world use and a range of tests have conclusively underlined the longevity of faigle wheels.

### **Notch toughness**

PAS-PU H's high notch toughness prevents damage to the tires – for instance, due to sharp edges or residual swarf – from developing into larger tears or cracks.

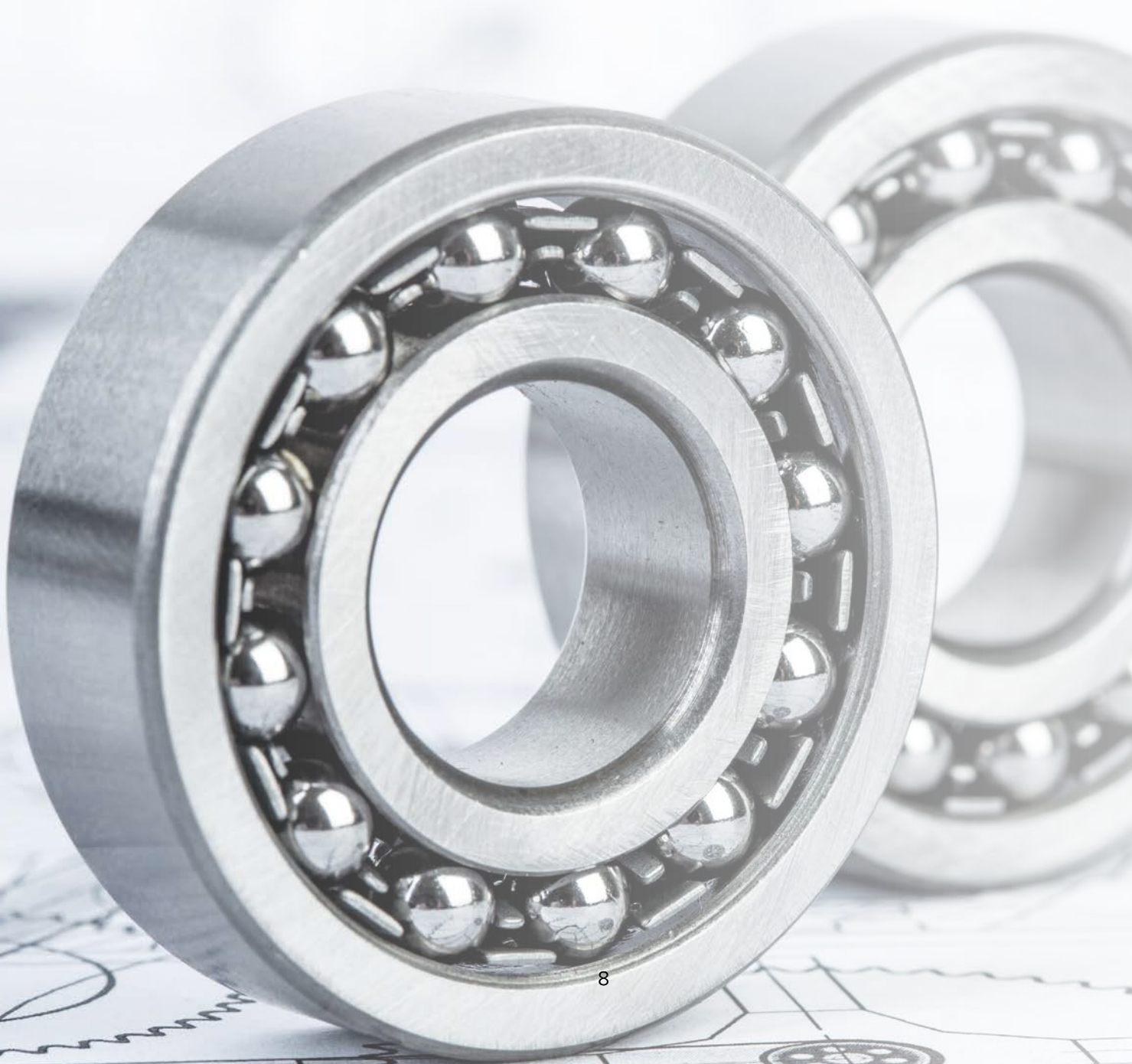
### **Resilience**

PAS-PU H effectively prevents the permanent deformation or flattening of wheels in your application thanks to its excellent resilience, which is far superior to that of cast polyurethanes, for example.

## PAS-80 GF30

Our wheel hubs adhere reliably to the polyurethane tire – as demonstrated by the millions of wheels currently in service day in, day out. The hubs are made from our standard fibre-glass-reinforced, polyamide-based material, which delivers optimum strength, high impact strength and consistent material properties over years of use.

# High-quality ball bearings for unbeatable reliability



## Tried and tested: faigle SFBC

### **Wheel components you can count on**

The ball bearing is a vital wheel component – so it plays a decisive part when it comes to reliability. Choosing high-quality ball bearings helps you to avoid problems in the long run.

faigle has over 50 years' experience of producing ball bearings to a range of different quality levels. We know all about the different demands placed on bearings.

Our SFBC ball bearing range has been developed to our very own standards and specifications. We produce around 15 million ball bearings a year, and we work with a small number of selected, long-standing, audited and certified partners in the premium quality segment. We also carry out ball-bearing quality checks in-house. So you can be sure that every ball bearing has been rigorously tested before it leaves the factory. And that translates into unrivalled quality and a long service life.

### **SFBC – key properties**

- Very smooth running
- Durability

### **Additional options**

- Special ball bearings made to measure or according to customer specifications
- Special, customised grease fillings for ball bearings
- In-house ball bearing testing laboratory
- Stainless steel ball bearings for special applications
- Ball bearings from well-known premium manufacturers such as SKF, FAG and NSK (on request)

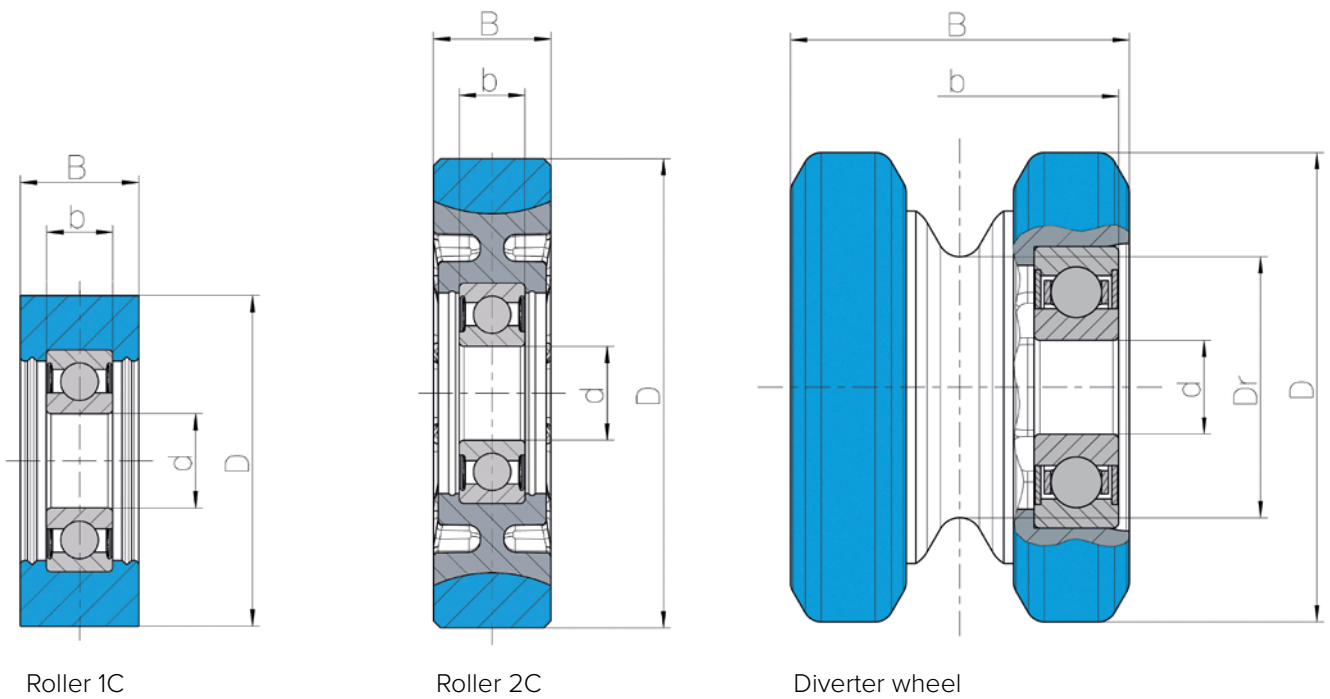
### **Only the best for your application**

Ask our experts. We're happy to give you all the advice you need, and we can also provide custom solutions.





## Dimensions



Outer diameter (D) | Inner diameter (d) | Width (B) | Ball bearing width (b) | Belt groove diameter (Dr)



# Standard wheel range



Article	044.01970
Description	Roller 2K 90x22 95A-H 6204 2Z
Tire material	PAS-PU 95A-H blue
Hub material	PAS-80 GF30
Dimensions (mm)	D 90.00 B 22.00 d 20.00 b 14.00
Bearing	6204 2Z



Article	044.00078
Description	Roller 1C 30x15 95A-TC 626 2Z
Tire material	PAS-PU 95A-TC blue
Hub material	
Dimensions (mm)	D 30.00 B 15.00 d 6.00 b 6.00
Bearing	626 2Z SFBC

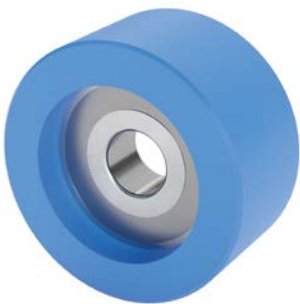


Article	044.00401
Description	Roller 1C 36x12 95A-TC 6001 2Z
Tire material	PAS-PU 95A-TC black
Hub material	
Dimensions (mm)	D 36.00 B 12.00 d 12.00 b 8.00
Bearing	6001 2Z SFBC

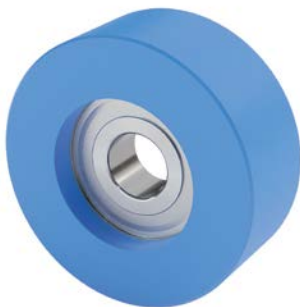
Outer diameter (D) | Inner diameter (d) | Width (B) | Ball bearing width (b)



Article	044.00077
Description	Roller 1C 40x15 95A-TC 626 2Z
Tire material	PAS-PU 95A-TC blue
Hub material	
Dimensions (mm)	D 40.00 B 15.00 d 6.00 b 6.00
Bearing	626 2Z SFBC



Article	044.00076
Description	Roller 1C 40x20 90A-H 6200 2Z
Tire material	PAS-PU 90A-H blue
Hub material	
Dimensions (mm)	D 40.00 B 20.00 d 10.00 b 9.00
Bearing	6200 2Z SFBC



Article	044.00044
Description	Roller 1C 50x20 90A-H 6201 2Z
Tire material	PAS-PU 90A-H blue
Hub material	
Dimensions (mm)	D 50.00 B 20.00 d 12.00 b 10.00
Bearing	6201 2Z SFBC



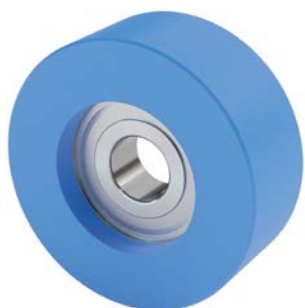
Article	044.00572
Description	Roller 1C 50x20 90A-H 6201 2Z P
Tire material	PAS-PU 90A-H blue
Hub material	
Dimensions (mm)	D 50.00 B 20.00 d 12.00 b 10.00
Bearing	6201 2Z Prime

Outer diameter (D) | Inner diameter (d) | Width (B) | Ball bearing width (b)

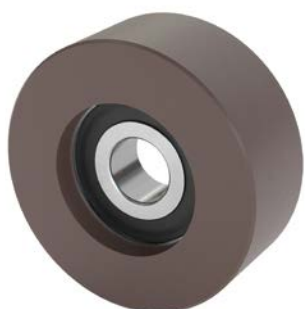
## Standard wheel range



Article	044.02306
Description	Roller 1C 50x20 90A-H 6201 2Z P
Tire material	PAS-PU 90A-H brown
Hub material	
Dimensions (mm)	D 50.00 B 20.00 d 12.00 b 10.00
Bearing	6201 2Z Prime



Article	044.00402
Description	Roller 1C 50x20 90A-TC 6201 2Z
Tire material	PAS-PU 90A-TC blue
Hub material	
Dimensions (mm)	D 50.00 B 20.00 d 12.00 b 10.00
Bearing	6201 2Z SFBC



Article	044.02307
Description	Roller 1C 50x20 90A-H 6201 2RS P
Tire material	PAS-PU 90A-H brown
Hub material	
Dimensions (mm)	D 50.00 B 20.00 d 12.00 b 10.00
Bearing	6201 2RS Prime



Article	044.00403
Description	Roller 1C 50x20 95A-TC 6201 2Z
Tire material	PAS-PU 95A-TC black
Hub material	
Dimensions (mm)	D 50.00 B 20.00 d 12.00 b 10.00
Bearing	6201 2Z SFBC

Outer diameter (D) | Inner diameter (d) | Width (B) | Ball bearing width (b)



Article	044.02308
Description	Roller 1C 54x22 90A-H LR 5201 2Z
Tire material	PAS-PU 90A-H brown
Hub material	
Dimensions (mm)	D 54.00 B 22.00 d 12.00 b 15.90
Bearing	LR 5201 2Z SFBC



Article	044.02031
Description	Roller 1C 55x15 90A-H 6002 2Z P
Tire material	PAS-PU 90A-H blue
Hub material	
Dimensions (mm)	D 55.00 B 15.00 d 15.00 b 9.00
Bearing	6002 2Z Prime



Article	044.02699
Description	Roller 2C 55x16 90A-H R250 6004 2Z
Tire material	PAS-PU 90A-H black
Hub material	PAS-60 GF 35
Dimensions (mm)	D 55.00 B 16.00 d 20.00 b 12.00
Bearing	6004 2Z SFBC



Article	044.00046
Description	Roller 1C 60x20 90A-H 6201 2Z
Tire material	PAS-PU 90A-H blue
Hub material	
Dimensions (mm)	D 60.00 B 20.00 d 12.00 b 10.00
Bearing	6201 2Z SFBC

Outer diameter (D) | Inner diameter (d) | Width (B) | Ball bearing width (b)

## Standard wheel range



Article	044.02296
Description	Roller 1C 70x25 90A-H 6303 2Z P
Tire material	PAS-PU 90A-H blue
Hub material	
Dimensions (mm)	D 70.00 B 25.00 d 17.00 b 14.00
Bearing	6303 2Z Prime



Article	044.00528
Description	Roller 1C 70x25 90A-H 6204 2Z
Tire material	PAS-PU 90A-H blue
Hub material	
Dimensions (mm)	D 70.00 B 25.00 d 20.00 b 14.00
Bearing	6204 2Z SFBC



Article	044.00726
Description	Roller 1C 70x25 90A-H 6204 2Z P
Tire material	PAS-PU 90A-H blue
Hub material	
Dimensions (mm)	D 70.00 B 25.00 d 20.00 b 14.00
Bearing	6204 2Z Prime



Article	044.00898
Description	Roller 1C 70x25 90A-TC 6204 2Z P
Tire material	PAS-PU 90A-TC blue
Hub material	
Dimensions (mm)	D 70.00 B 25.00 d 20.00 b 14.00
Bearing	6204 2Z Prime

Outer diameter (D) | Inner diameter (d) | Width (B) | Ball bearing width (b)



Article	044.02309
Description	Röller 1C 70x25 54D-TC 6204 2Z P
Tire material	PAS-PU 54D-TC black
Hub material	
Dimensions (mm)	D 70.00 B 25.00 d 20.00 b 14.00
Bearing	6204 2Z SFBC Prime



Article	044.01166
Description	Roller 2C 76.2x22 95A-H 6203 2RS
Tire material	PAS-PU 95A-H blue
Hub material	PAS-PA GF35
Dimensions (mm)	D 76.20 B 22.00 d 17.00 b 12.00
Bearing	6203 2RS SFBC



Article	044.02450
Description	Röller 2C 80x25 80A-TCS AST 6003 2Z P
Tire material	PAS-PU 80A-TCS AST blue
Hub material	PAS-60 GF20 AST
Dimensions (mm)	D 80.00 B 25.00 d 17.00 b 10.00
Bearing	6003 2Z Prime



Article	044.00826
Description	Roller 1C 80x25 90A-H 6204 2Z
Tire material	PAS-PU 90A-H blue
Hub material	
Dimensions (mm)	D 80.00 B 25.00 d 20.00 b 14.00
Bearing	6204 2Z SFBC

Outer diameter (D) | Inner diameter (d) | Width (B) | Ball bearing width (b)

## Standard wheel range



Article	044.00048
Description	Roller 1C 80x25 90A-H 6R100 6204 2Z P
Tire material	PAS-PU 90A-H blue
Hub material	
Dimensions (mm)	D 80.00 B 25.00 d 20.00 b 14.00
Bearing	6204 2Z Prime



Article	044.02233
Description	Roller 2C 90x22.2 85A-H 6203 2Z
Tire material	PAS-PU 85A-H blue
Hub material	
Dimensions (mm)	D 90.00 B 22.00 d 17.00 b 12.00
Bearing	6203 2Z SFBC



Article	044.01823
Description	Roller 2C 90x22 85A-H R390 6204 2Z
Tire material	PAS-PU 85A-H black
Hub material	PAS-80 GF30
Dimensions (mm)	D 90.00 B 22.00 d 20.00 b 14.00
Bearing	6204 2Z SFBC



Article	044.01301
Description	Roller 2C 90x22 95A-H 6204 2Z P
Tire material	PAS-PU 95A-H blue
Hub material	PAS-80 GF30
Dimensions (mm)	D 90.00 B 22.00 d 20.00 b 14.00
Bearing	6204 2Z Prime

Outer diameter (D) | Inner diameter (d) | Width (B) | Ball bearing width (b)



Article	044.01821
Description	Roller 2C 90x22 95A-H R390 6204 2Z
Tire material	PAS-PU 95A-H blue
Hub material	PAS-80 GF30
Dimensions (mm)	D 90.00 B 22.00 d 20.00 b 14.00
Bearing	6204 2Z SFBC



Article	044.02295
Description	Roller 2C 90x22 95A-H 6204 2RSL P
Tire material	PAS-PU 95A-H blue
Hub material	PAS-80 GF30
Dimensions (mm)	D 90.00 B 22.00 d 20.00 b 14.00
Bearing	6204 2RSL Prime



Article	044.01669
Description	Roller 2C 90x22 95A-H R390 6204 2Z P
Tire material	PAS-PU 95A-H blue
Hub material	PAS-80 GF30
Dimensions (mm)	D 90.00 B 22.00 d 20.00 b 14.00
Bearing	6204 2Z Prime



Article	044.00050
Description	Roller 2C 100x25 90A-H 6204 2Z
Tire material	PAS-PU 95A-H blue
Hub material	PAS-80 GF50
Dimensions (mm)	D 100.00 B 25.00 d 20.00 b 14.00
Bearing	6204 2Z SFBC

Outer diameter (D) | Inner diameter (d) | Width (B) | Ball bearing width (b)

## Standard wheel range



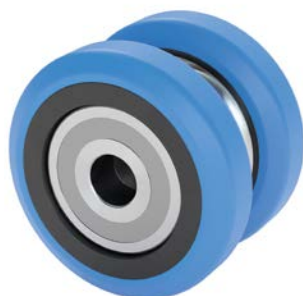
Article	044.02294
Description	Roller 2C 100x25 90A-H R100 6204 2Z
Tire material	PAS-PU 90A-H blue
Hub material	PAS-80 GF50
Dimensions (mm)	D 100.00 B 25.00 d 20.00 b 14.00
Bearing	6204 2Z SFBC



Article	044.02449
Description	Roller 2C 100x25 90A-H 2x6202 2Z P
Tire material	PAS-PU 90A-H blue
Hub material	PAS-80 GF50
Dimensions (mm)	D 100.00 B 25.00 d 15.00 b 25.00
Bearing	2x6202 2Z Prime

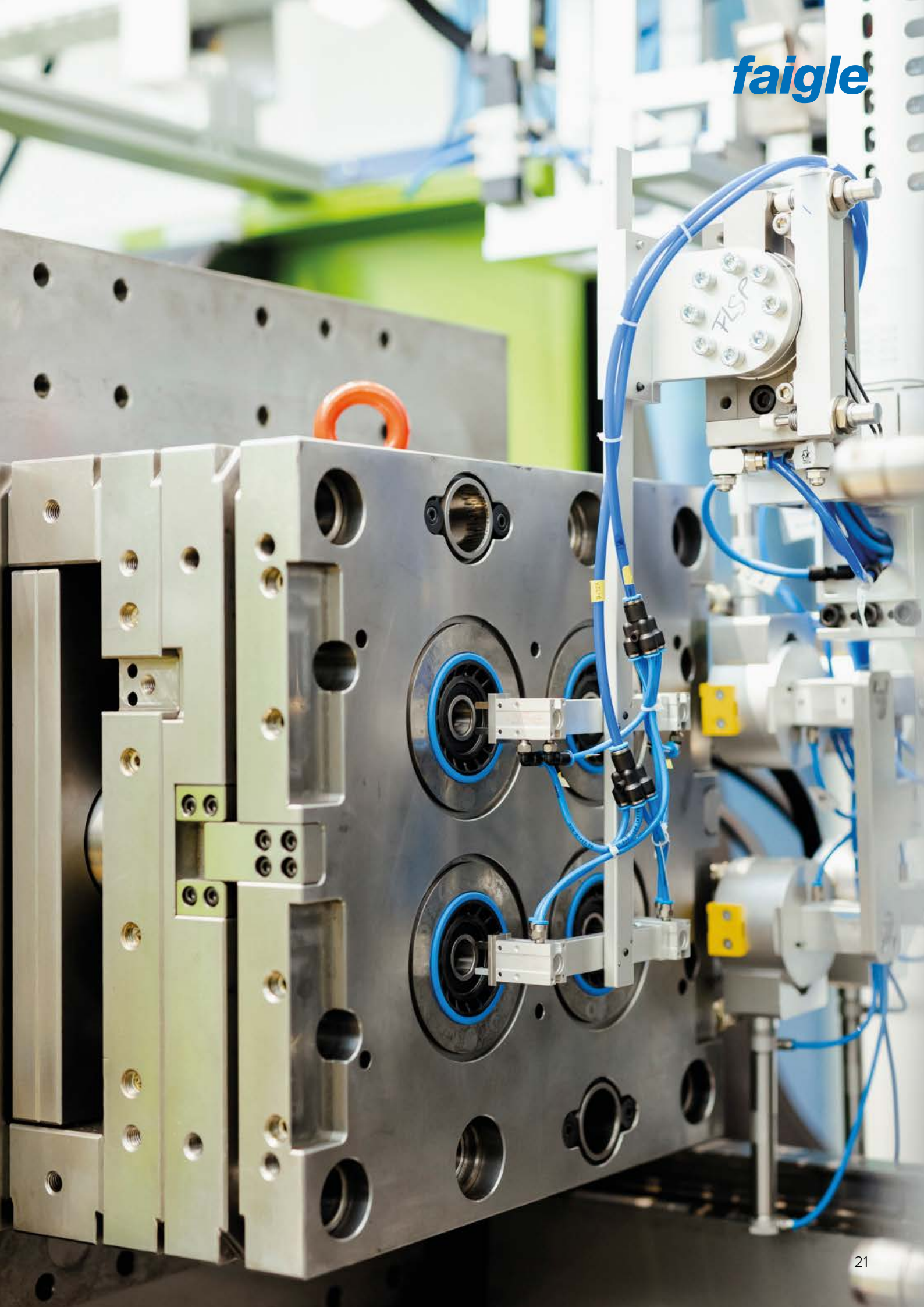


Article	044.02778
Description	Roller SE 100x20 95A-TCS S2 6204 2Z FDS
Tire material	PAS-PU 95A-TCS black
Hub material	PAS-60 GF 50
Dimensions (mm)	D 100.00 B 20.00 d 17.00 b 23.60
Bearing	6204 2Z, inkl. FDS SFBC



Article	044.01953
Description	Roller AR 50x40 85A-TC 2x6200 2Z
Tire material	PAS-PU 85A-TC blue
Hub material	PAS-60 GF20 AST- Stainless steel ring
Dimensions (mm)	D 50.00 B 40.00 d 10.00 b 33.80 Dr 27.80
Bearing	2 x 6200 2Z SFBC

Outer diameter (D) | Inner diameter (d) | Width (B) | Ball bearing width (b) | Belt groove diameter (Dr)



# The right wheel for your application

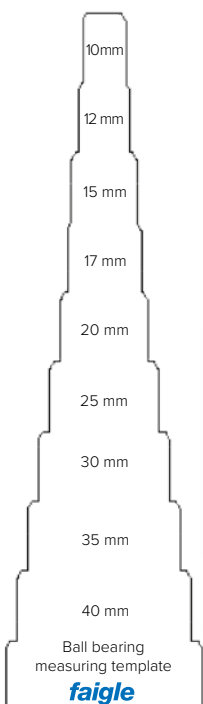
## Product identification made easy

Every day, we work to find the best solutions for our customers. All we need is some basic information, then we will get back to you quickly with a proposal based on your requirements. Whether you need wheels or other plastic parts, you can rest assured that we will only supply proven quality products.

**You can find details of our wheels for intralogistics systems on our website.** And our experts are always on hand to give advice and recommend products that meet your requirements.

## What we need to know:

- Outer diameter (D)
- Inner diameter (d)
- Width (B)
- Quantity
- Application
- Max. load (kg)
- Max. speed (m/s)

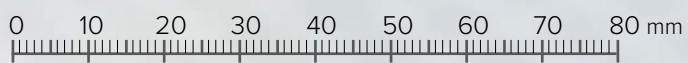


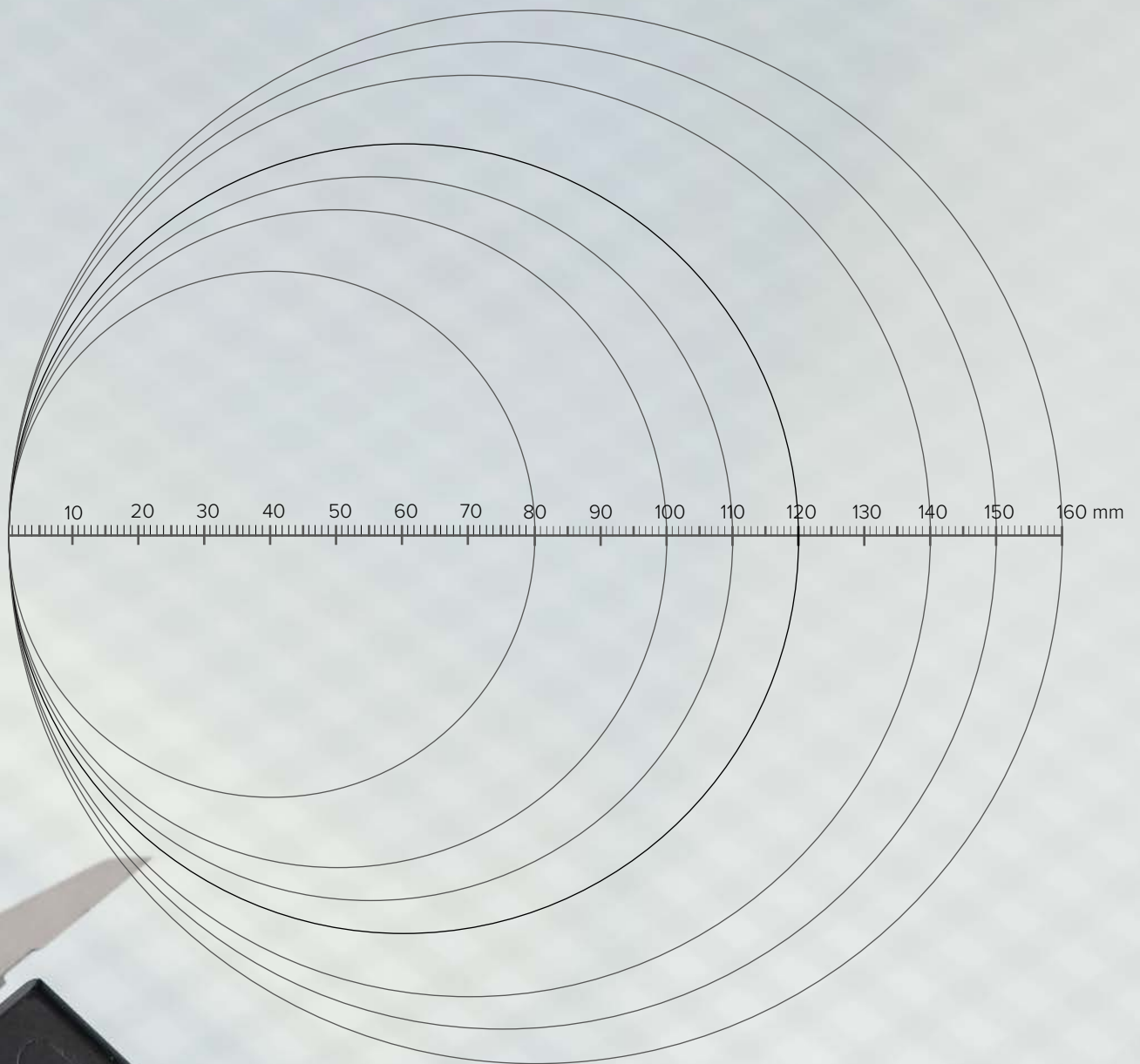
The measuring template in this catalogue will help you to specify the correct ball bearing size.



# How to take the correct measurements for your wheels

Width (B)



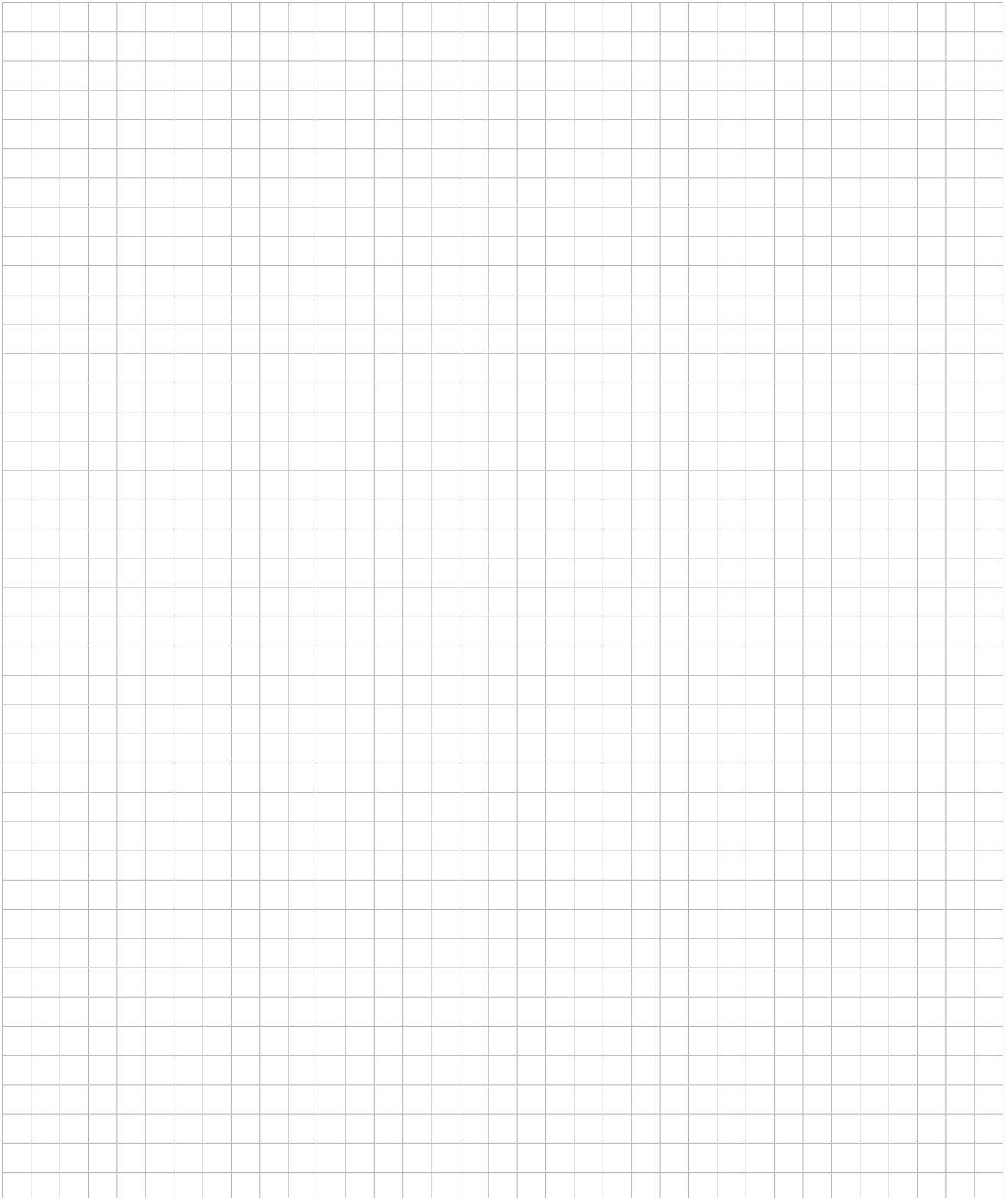


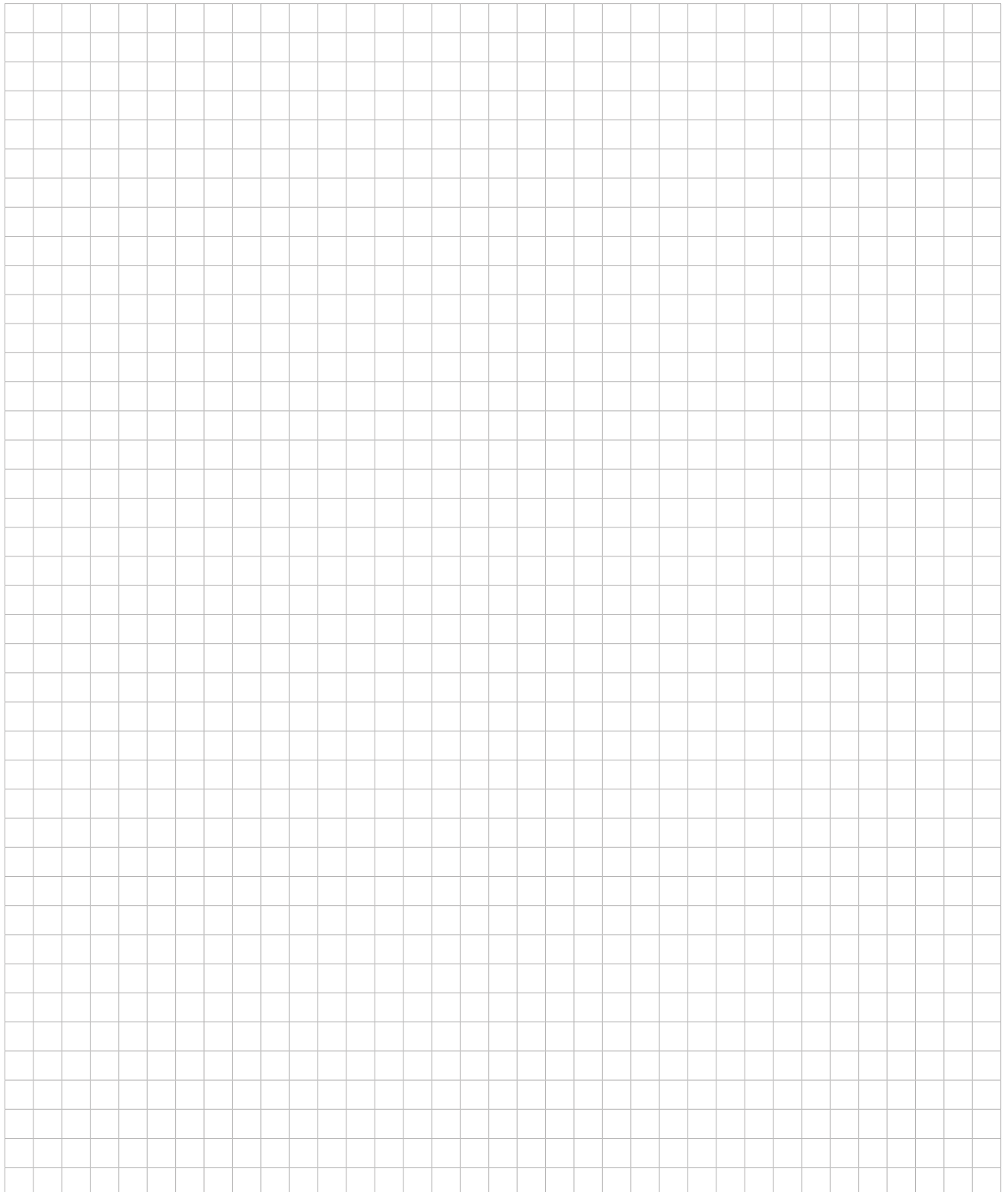
### Outer diameter (D)

Place the left edge of the wheel on the far left of the scale and read off the corresponding diameter on the right.



# Notes





# faigle wheels – working reliably all over the world



If you have any questions or need further information, we'll be happy to talk to you.

T +43 5574 6811  
[intralogistics@faigle.com](mailto:intralogistics@faigle.com)

**faigle Kunststoffe GmbH**

a faigle Group company  
Landstrasse 31  
6971 Hard · Austria  
T +43 5574 6811  
[kunststoffe@faigle.com](mailto:kunststoffe@faigle.com)  
[www.faigle.com](http://www.faigle.com)

**faigle Igoplast AG**

a faigle Group company  
Werkstrasse 11  
9434 Au · Switzerland  
T +41 71 747 41 41  
[igoplast@faigle.com](mailto:igoplast@faigle.com)  
[www.faigle.com](http://www.faigle.com)

**Suzhou faigle Engineering Plastics Co., Ltd.**

a faigle Group company  
No. 7 Taiqian Road · New District  
215129 Suzhou · China  
T +86 512 8817 8049  
[office.suzhou@faigle.com](mailto:office.suzhou@faigle.com)  
[www.faigle.com](http://www.faigle.com)